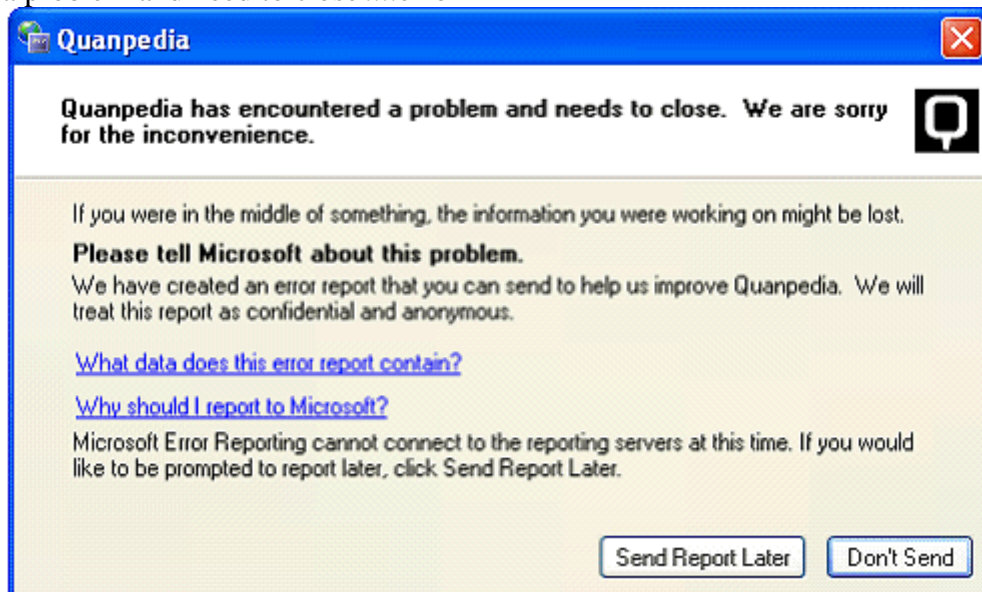


For your information

The Chemical Analysis_Xevo TQ Quanpedia database for SCN 714 may randomly crash under the following circumstances:

1. Press Run Compounds- Quanpedia immediately crashes with the 'Quanpedia has encountered a problem and need to close'....error:



2. Press Run Samples- no new methods are created. Quanpedia just returns to the start screen when you enter a file name and press 'Create'. There is no crash.
3. Press Advanced / Analyses- all options result in a crash, with the same error as above. It occurs when you are in the Edit Column Information screen and you press 'Next' in the QP wizard.

NB: Selecting Advanced/ Compounds works OK.

Once the failure has occurred, it will keep on occurring. The problem can be solved, at least for a time, by using the workaround given below. Restarting MassLynx or rebooting the PC does not solve the problem.

The old SCN 686 Chemical Analysis_Xevo TQ database works in both SCN 686 and SCN 714. (Note that the SCN 714 database cannot be opened in SCN 686, due to changes to Quanpedia in SCN 714).

To Reproduce

- I. Install MassLynx basic security SCN 714 and setup 2 Users (A and B) with all permissions granted (NB Full Security does not support Quanpedia).
- II. Log into MassLynx as User A and start Quanpedia
- III. Load Chemical Analysis_Xevo TQ.qdb
- IV. Press Run Compounds to show that it works OK.
- V. Close MassLynx
- VI. Log into MassLynx as User B and start Quanpedia

- VII. Press Run Compounds and notice that it crashes. Close the program.
- VIII. Re-start QuanPedia and load a different database.
- IX. Press Run Compounds and note that the crash still occurs.
- X. Re-start QuanPedia
- XI. Press Run Compounds to show that it now works OK
- XII. Load Chemical Analysis_Xevo TQ.
- XIII. Press Run Compounds to show that it now works.

Workaround

1. Open a different database.
2. Choose Run Compounds (Note that the error will occur)
3. Re-open the Chemical Analysis_Xevo TQ database.
4. Choose Run Compounds (it should now work OK)